

Installation Instructions

Plastibec Millwork Deck Cover

Recommended tools:

- Drill & Phillips Bit
- Miter Saw with 60-72 tooth blade
- Measuring Tape
- Putty knife
- Tin snips
- Level
- Drywall knife
- Shears
- Pencil

Additional materials: (purchased separately)

- 1" stainless steel pan head wood screws

* **please use safety equipment and caution when operating ANY tool!**



So you've decided to cover your unsightly surface! Whatever it may be Deck, Dock, Patio, Siding...

Just remember, it needs to be **attached to something structural**, as you will be securing it with screws.

The deck cover will provide a beautiful finish to old or weathered surface.

It will not, however, correct any structural faults.

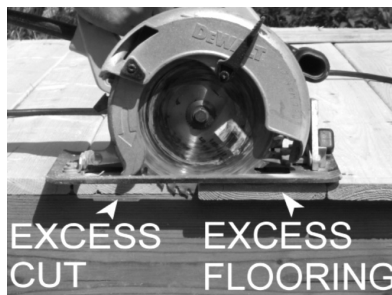
It's not recommended to install the product when the temperature is below 10° Celsius (50° Fahrenheit)



Step 1- Preparing the surface

You're going to want to start with the edges of your old surface.

- Cut off excess flooring to match the contours of the existing floor of the structure.
- Screw down all protruding planks to obtain a level surface.
- Using level ensure deck slope goes in desired direction
- If possible remove any railing screwed to the structure. If it is not possible to remove the railing cut the flooring to the contour of the railing.
- Remove and replace any boards containing rot.

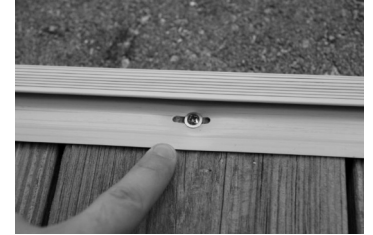


Step 2 – Installing the side edge trims

Secure the Multi Trim Side Edge to your old surface, by screwing through the slots as shown

(*Do not apply screws anywhere else).

- Place the screw at the center of the slot (this will allow the PVC to naturally adapt to its outside temperature fluctuations)
- Secure screws every 8-12 inches.
- Apply the screws with very little torque, enough so the deck board can freely move.



Step 3 – Installing Deck Cover Boards

Once your side edge trim is fastened, you can start to install the deck cover boards.

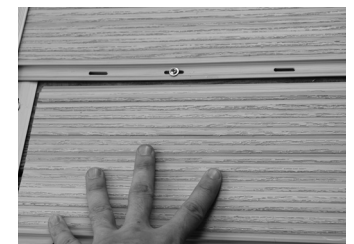
When the outside temperature is high, the expansion is at the maximum; position the deck board deep in the next plank to allow contraction. When the outside temperature is cold, leave space for expansion between the two planks. See illustration.



Many installation types are possible.

- a) Perpendicular to old surface board (preferred option)
- b) Diagonal 22.5 or 45 degree
- c) Aligned with old surface boards (not recommended as securing of deck cover boards may occur in gaps between old surface boards.)

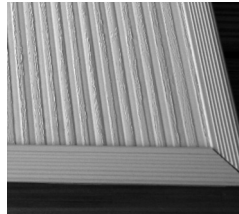
- Slide the deck cover board into the Multi Trim Side Edge using a putty knife as shown. It should fit with very little effort.
- Using a square verify desired angle.
- Place the screw at the center of the slot (this will allow the PVC to naturally adapt to its outside temperature fluctuations).
- Secure screw every 8-12 inch.
- Apply the screws with very little torque, enough so the deck board can move freely.
- Continue to position deck cover boards on the old surface and secure with screws.
- Each deck cover board fits into the other with minimal effort, via tongue and groove.



Step 4 - Finishing

If longer lengths of deck boards are required, then the installation should be split into sections accordingly. Use the connector Trim to join two sections together. (see tips section to join Multi Trim Side Edge)

- When the temperature is low leave $\frac{1}{4}$ inch in the transition molding to allow expansion when the outside temperature will be higher.
- Cut the final piece of deck cover board $\frac{3}{8}$ " shorter than the distance between the finished edge of the last installed piece and the outside edge of the Multi Trim Side Edge.
- On an angled installation of deck cover boards, cut the final piece $\frac{3}{8}$ " shorter on each end than the distance between the finish edge of the last installed piece and the outside edge of the Multi Trim Side Edge.
- Slide the deck cover board completely into Multi Trim Side Edge and slide it back in the groove of the last installed deck cover board.



(Optional: covering steps and risers)

If you decide to cover the stringer, you must do so before covering steps and risers.

- Install the Multi Trim Side Edge on the inside edges of the stringer.
- Install deck cover boards from top to bottom vertically on the stringer

The top surface of the steps installs the same way as a deck surface. (refer to step 1)

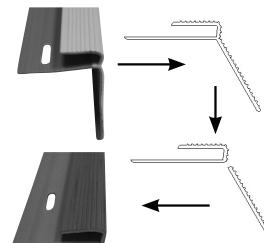
To cover the risers we recommend placing the deck cover boards vertically.



Multi Trim Side Edge
Used to cover the Edges of 2 inch Surfaces



Side Edge
Use the Multi-Trim Side Edge and remove the bottom part to obtain the Side Edge



Connector Trim
Used to join two deck cover boards together



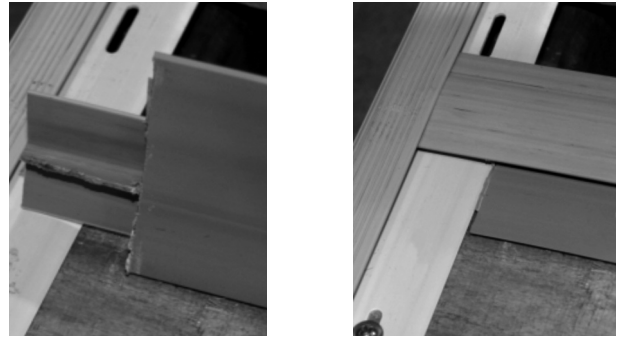
Transition Ramp Trim
Used to adjust for height differences



Screw
Stainless Steel pan head wood screw, 1 inch length

Tips

- When cutting Multi-Trim Side Edge and deck cover boards, saw into the finish surface to obtain a cleaner cut.
- Never nail through the face of the deck board or trims.
- For obstacles such as railings, posts, columns etc... always calculate a 1/4" distance between the deck cover board and any obstacle for the installation of the Multi-Trim Side Edge.



When you join a connector trim and a Multi-Trim Side Edge you may want to remove 1.5" of the connector trim to get a perfect finish.

Cleaning

The beauty of vinyl deck cover is maintained with little efforts. Although vinyl decking will get dirty like all items exposed to the atmosphere. It's possible to wash it with garden hose. If neither rain nor hosing does a satisfactory job, then wash it just like a car with a brush that has soft bristles and a non abrasive cleaner.